

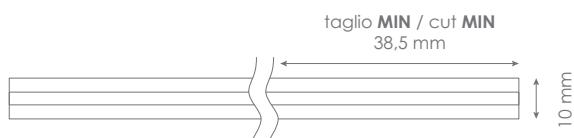
FLEX COB - PLUS 1700-4000

Led Strip



Alimentazione / Operating Voltage	24 V
Potenza / Power	18 W/mt
Larghezza Pcb / Width Pcb	10 mm
Altezza / Height Stripe	2 mm
Lunghezza / Length Stripe	5000 mm
Taglio segmento/ Length per Cut	38,5 mm
N° LED	144 / mt: COB
IP	20
Temperatura esercizio Storage Temperature	- 30° C - + 70°C
Lifetime	L70B20 50000H

	Flusso Luminoso Luminous Flux	Efficienza Efficiency	Colore Luce Led Color
DA-COB-1700-4000	1832 lm/mt	135 lm/W	4000 K



Via Cadorna, 40/42
20032 Cormano (MI)
Tel. +39 02 84269630
Fax +39 02 84269631
info@dadalighting.com
www.dadalighting.com

FLEX COB - PLUS 1700-4000

Led Strip

Light efficiency:



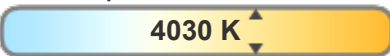
Output: 1832 lm

Light quality:



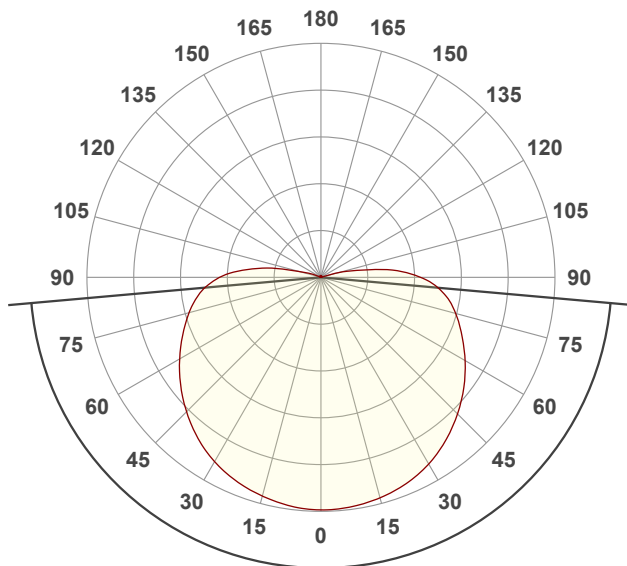
Peak: 366 cd

Color temperature:



Power: 18,0 W

24,0V @ 0,750A

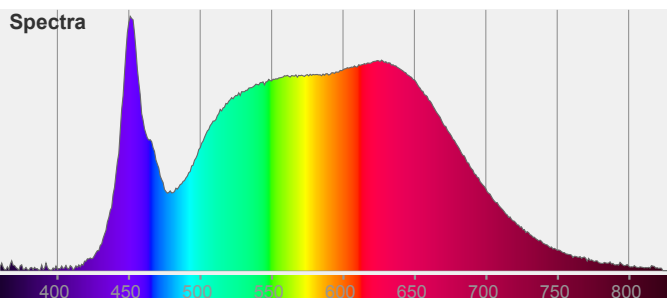


Beam angle **169,8°**

Color

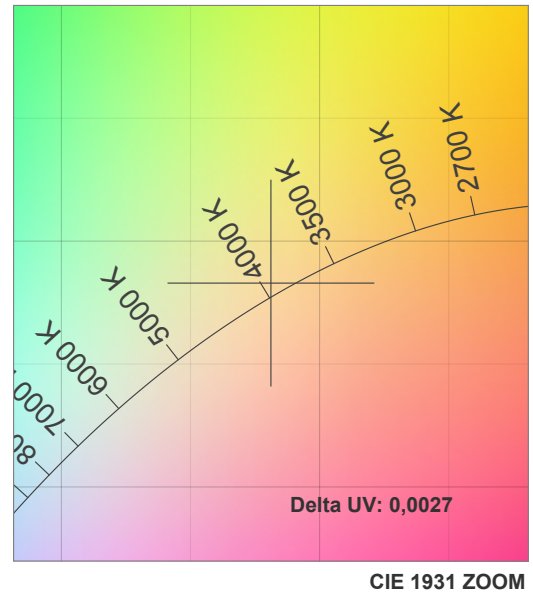
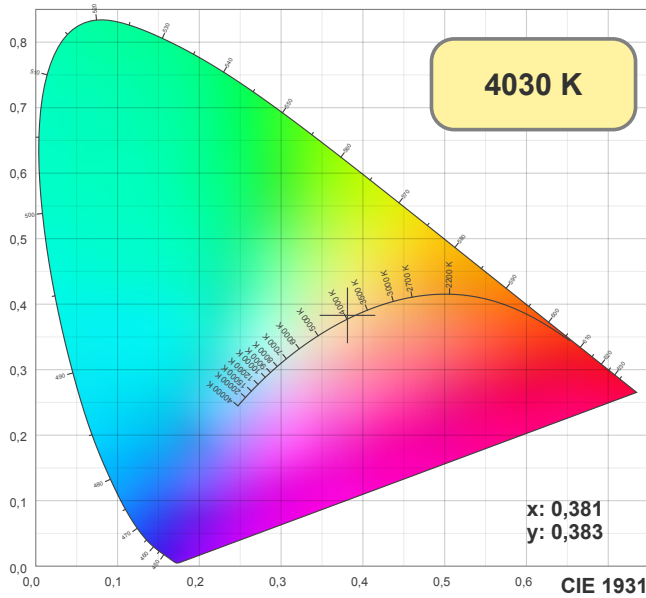


CIE1931
x: 0,381
y: 0,383

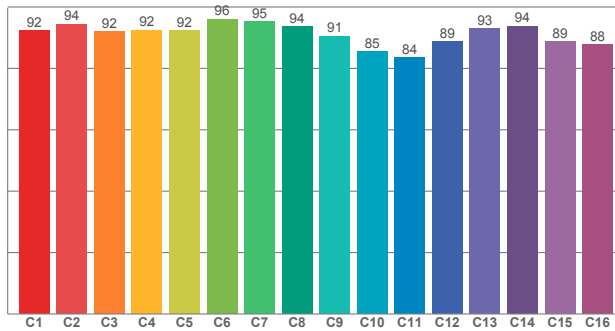


FLEX COB - PLUS 1700-4000

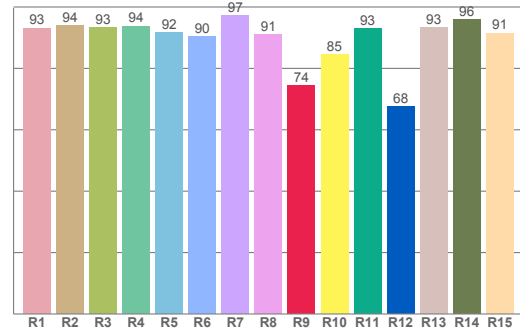
Led Strip



TM30: 91,0



CRI: 93,0 (R1-R8)



CRI R values, only R1-R8 are used to calculate final CRI value

R1	R2	R3	R4	R5	R6	R7	R8	R9	R10	R11	R12	R13	R14	R15
93,16	93,92	93,17	93,72	91,58	90,30	97,17	90,94	74,29	84,51	92,92	67,51	93,21	95,82	91,44

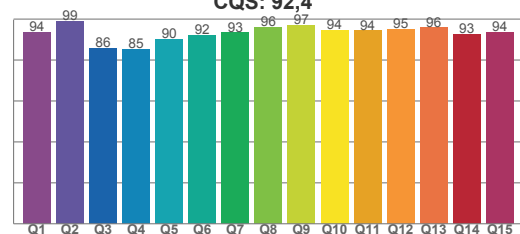
TM30 C values, 16 binned values out of total of 99 C values

C1	C2	C3	C4	C5	C6	C7	C8	C9	C10	C11	C12	C13	C14	C15	C16
92,30	94,42	91,95	92,48	92,29	96,10	95,13	93,57	90,50	85,43	83,57	88,63	93,00	93,69	88,72	87,71

CQS Q values

Q1	Q2	Q3	Q4	Q5	Q6	Q7	Q8	Q9	Q10	Q11	Q12	Q13	Q14	Q15
93,72	99,13	85,85	85,47	90,23	92,01	93,37	95,93	97,24	94,46	94,37	95,20	95,83	92,73	93,53

CQS: 92,4

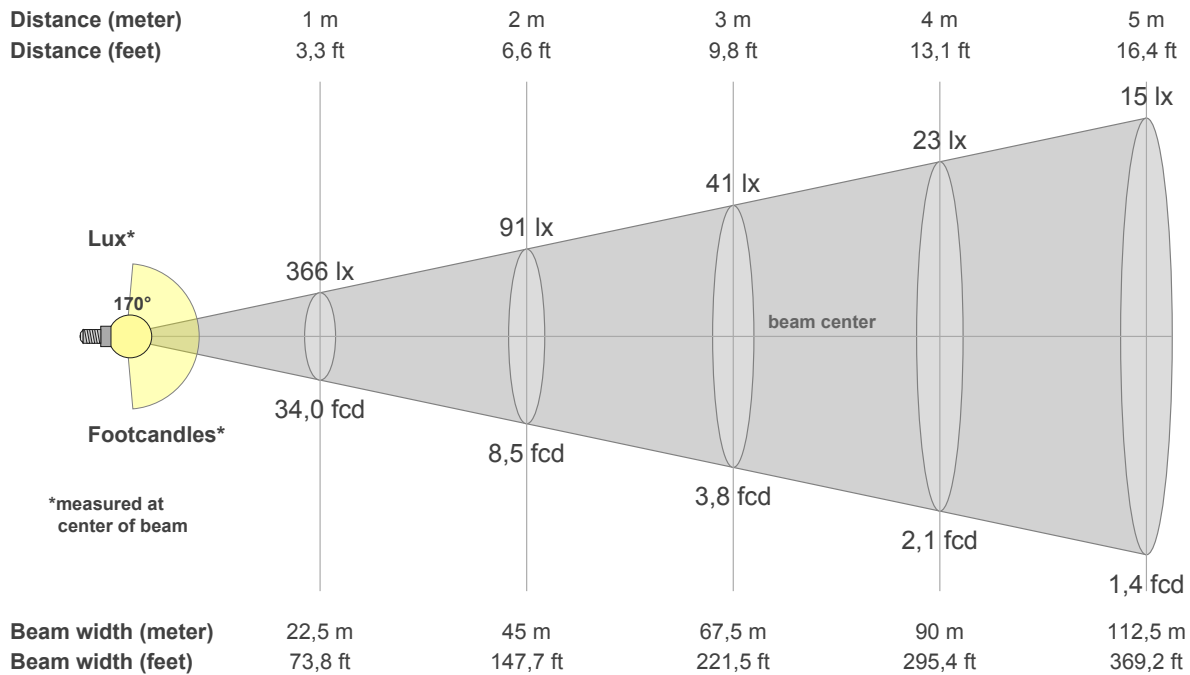


Color parameters

CCT	CRI	CRI R9	TM30 Rf	TM30 Rg	CQS	x	y	u	v	Duv
4030 K	93,0	74,3	91,0	99,0	92,4	0,4	0,4	0,2	0,3	0,0027

FLEX COB - PLUS 1700-4000

Led Strip



Intensities in 0° c-plane

0°	9°	18°	27°	36°	45°	54°	63°	72°	81°	90°	99°	108°	117°	126°	135°	144°	153°	162°	171°
366	363	356	344	326	304	279	253	228	201	156	82	15	2	2	2	2	3	2	3
100%	99%	97%	94%	89%	83%	76%	69%	62%	55%	43%	22%	4%	1%	1%	1%	1%	1%	1%	1%

Intensities in 0° c-plane

0°	9°	18°	27°	36°	45°	54°	63°	72°	81°	90°	99°	108°	117°	126°	135°	144°	153°	162°	171°
366	363	356	344	326	304	279	253	228	201	156	82	15	2	2	2	2	3	2	3
100%	99%	97%	94%	89%	83%	76%	69%	62%	55%	43%	22%	4%	1%	1%	1%	1%	1%	1%	1%

Intensities in 180° c-plane

0°	9°	18°	27°	36°	45°	54°	63°	72°	81°	90°	99°	108°	117°	126°	135°	144°	153°	162°	171°
366	362	353	340	322	299	274	248	223	196	157	92	22	3	3	3	3	3	3	3
100%	99%	96%	93%	88%	82%	75%	68%	61%	54%	43%	25%	6%	1%	1%	1%	1%	1%	1%	1%

Intensities in 180° c-plane

0°	9°	18°	27°	36°	45°	54°	63°	72°	81°	90°	99°	108°	117°	126°	135°	144°	153°	162°	171°
366	362	353	340	322	299	274	248	223	196	157	92	22	3	3	3	3	3	3	3
100%	99%	96%	93%	88%	82%	75%	68%	61%	54%	43%	25%	6%	1%	1%	1%	1%	1%	1%	1%

Beam angle 50%	Field angle 10%	Cutoff angle 2,5%	Intensity ratio in 120° cone	Intensity ratio in 90° cone
169,8°	209,8°	221,2°	53,4%	33,5%